

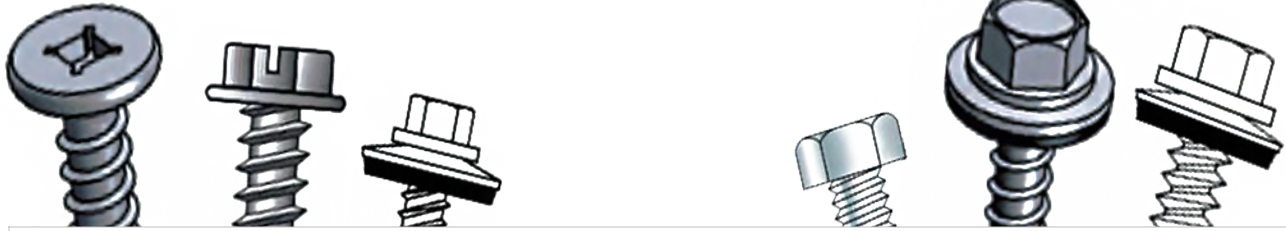
SCREWS, ACCESSORIES, & MISC.

- ✓ Fasteners / Screws (Page 22)
- ✓ Translucent Light Panels / Poly-Lite (Page 23)
- ✓ Mastic (Page 24)
- ✓ Closures (Page 25)
- ✓ Venting (Page 26)
- ✓ Pipe Boots (Page 27)



SCREWS

Distributed by Miramac Metals, Inc.



#10 x 1" Metal-to-Wood Fastener

#10 x 1.5" Metal-to-Wood Fastener

#10 x 2" Metal-to-Wood Fastener

#10 x 1.125 Pan-head Ultra Low (SL)

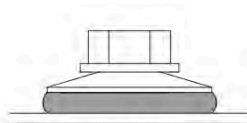
#12 x 3/4" Stich Fastener

#14 x 1" Metal-to-Wood Fastener

#14 x 1.5" Metal-to-Wood Fastener

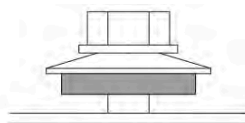
#12 x 1" Flat Top Self Driller - Metal-to-Metal Fastener

1/8" Rivets



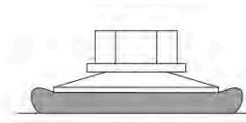
CORRECT

EPDM Material is compressed and visible at the washer.



TOO LOOSE

EPDM not at visible joint. Not enough compression.



TOO TIGHT

EPDM is over-driven. Material is protruding beyond the fastener.

TRANSLUCENT LIGHT PANELS

Distributed by Miramac Metals, Inc.

POLYCARBONATE LIGHT PANELS FOR METAL BUILDINGS

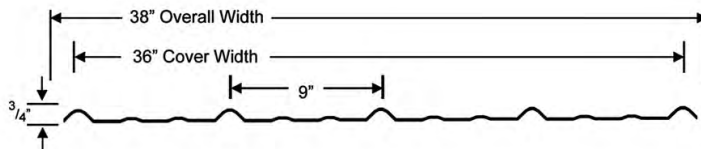
POLY - LITE



Specifications

Panel Width:	38" U.S. Standard
Span:	2' On Center
Rib Height:	3/4"
Panel Length:	12'
Panel Thickness:	0.032"
Weight:	0.68 lbs/ft
Fasteners Per Panel:	Every Six Inches
Colors:	Clear - 90% Light Transmission Smoke - 80% Light Transmission White - 70% Light Transmission

Stocking in 12' lengths:
- Clear
- White
- Smoke



Skylight Panels
&
Sidelight Panels

Benefits

- Matches the most popular metal roofing profile.
- Up to 20 times stronger than fiberglass.
- 100% UV protected.
- Will retain optical clarity.
- Withstands extreme temperatures. (-40°F to +270°F)
- Hail and wind resistant.
- Best snow load capacity.
- Save electricity by using less artificial light and let more natural light in.
- 10 year limited warranty.
- Poly carbonate panels for metal buildings.
- Skylight, panels, side, light

MASTIC

Distributed by Miramac Metals, Inc.

High Quality Metal-to-Metal Sealing Tape



- High quality adhesive
- Joins metal - to - metal
- Seals around windows, doors, and more
- Adhesive holds on hot metal panels



Mastic Tape: 3/16" x 3/8" x 40' Roll



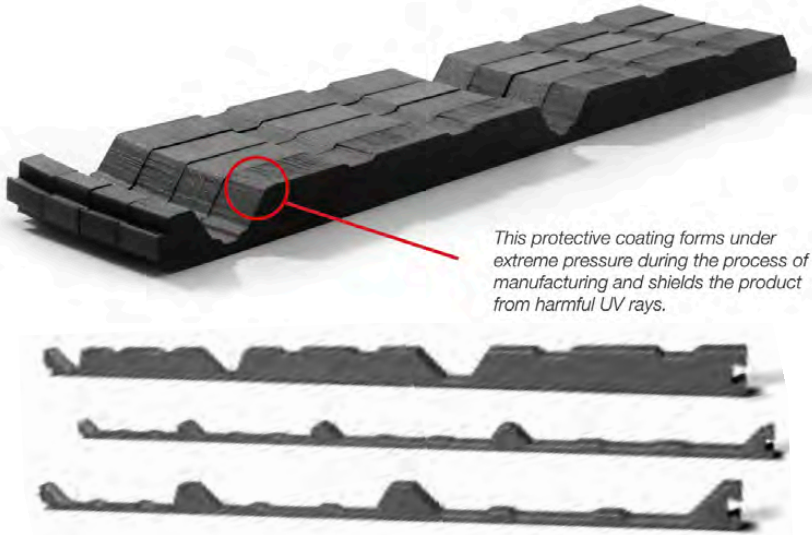
Mastic Tape: 3/32" x 3/8" x 45' Roll

Mastic is a high quality joint and end lap sealing tape that is easy to trim. Mastic solves the adhesive failure problems associated with hot metal roofing and wall jobs. Mastic is made with a superior adhesive which is non-staining, permanently flexible, and stays in place. This product can be used to seal around windows, doors, roof vents, stacks, access doors and other penetration points. Once Mastic is applied, it adheres to the metal roof panel and stays in position even on the hottest days. Choose mastic and get the job done.

CLOSURES

Distributed by Miramac Metals, Inc.

CUSTOM FIT FOAM CLOSURE SYSTEM



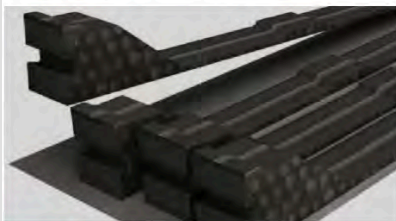
CLOSURE-FOAM

- Full 1/4" bead (once installed) of adhesive applied
- Profiles for every application
- Thickness variety
- Better UV resistance
- No excess scrap for easier cleanup

This product is designed to stay in place. Industrial adhesive eliminates product shift, even in most wind, with a 1/4" adhesive bead applied to either the flat or the ribbed side of Closure-Foam.

It will also adhere in subfreezing temperatures and on wet surfaces. Closure-Foam is economically priced without sacrificing quality. Crosslink polyethylene foam has a unique coating that gives it better UV resistance and durability.

Easy Install



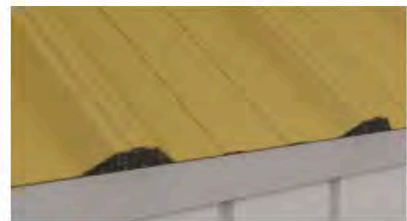
Step 1:

Ensure the self-adhesive closure configuration fits the roof panel used.



Step 2:

The inside Closure fits the underside of the panel.



Step 3:

Place the roof panel over pre-cut closure configuration for a snug fit. Attach panel

UNIVERSAL VENTING MATERIAL

Distributed by Miramac Metals, Inc.

Ventilation



Specs

Net Free Area: FOV - 1" free-standing product, NFA 23 sq. in.*

1- 1/2" x 3" x 10': Rib heights up to 1-1/4"

1- 1/2" x 2" x 10': Rib heights up to 1-1/4"

1" x 3" x 10': Rib heights up to 3/4"

1" x 2" x 10': Rib heights up to 3/4"

Air Permeability: >760 cubic feet per minute

Cold Cracking: -55° C (-130° F)

Tear Strength: 3.5 ppi

Tensile Strength: 16 psi – Elongation 175%

Compressive Strength: 1.8 psi at 75%

Abrasion: No Damage

*Effective Net Free Area varies based on product height, panel profile, and installation methods.

Standard warranty

Easy Install

Installation is a simple three-step process easily handled by one installer. Flex-O-Vent comes in easy-to-handle 10-foot rolls (mirroring most ridge cap lengths) or larger 20-foot rolls if you prefer. It is easily cut with scissors or utility knife and a double bead of M63 adhesive holds Flex-O-Vent securely in place until the ridge cap is installed.



Step 1:

Make sure panel is free of dust and debris. If not pre-cut, cut 2" slot at ridge. Measure and mark where the ridge cap will sit on the panel.



Step 2:

Start from the end of the ridge, rolling out Flex-O-Vent along the length of the ridge (both sides), making sure the vent sits "up-slope" from the edge of the ridge cap.



Step 3:

Apply ridge cap, compressing material between the ridge cap and major rib. Fasten at the major rib using a screw gun set to at least 2700 rpm.

PIPE BOOTS / BOOT FLASHER

Distributed by Miramac Metals, Inc.

Universal & Retrofit Boot Flashing Options

Available in black or grey EPDM / red or grey silicone



Standard warranty



- Easy, on-site customization for superior fit
- Sleeve flexibility absorbs vibration and pipe movement caused by expansion/contraction
- Maximum resistance to ozone weathering

Specs

Ozone Resistance: 70 hrs @ 500pphm (EPDM and RS)

High Temp. Resistance:

Intermittent: +135°C/+275°F (EPDM), +260°C/+500°F (RS)

Continuous: +100°C/+212°F (EPDM), +225°C/+437°F (RS)

Low Temp. Resistance: -55°C/-67°F (EPDM),

-74°C/-101°F (RS)

Compression Set: 25% (EPDM), 50% (RS)

*RS = Red Silicone

	Pipe Range	Top Opening	Overall Height	Base
Mini	0" - 3/4" (0-19mm)	Closed	1 1/2" (38mm)	4" (101mm)
#1	1/4" - 2 1/2" (6-63mm)	Closed	3 1/4" (82mm)	3 1/4" (82mm)
#2	1 3/4" - 3" (44-76mm)	1 1/4" (31mm)	4" (101mm)	6 1/4" (158mm)
#3	1/4" - 5" (6-127mm)	Closed	4" (101mm)	7 3/4" (196mm)
#4	3" - 6 1/4" (76-158mm)	2 1/4" (57mm)	4 3/4" (120mm)	9 1/4" (234mm)
#5	4 1/4" - 7 3/4" (107-196mm)	3 1/2" (88mm)	4 1/4" (107mm)	10 1/2" (266mm)
#6	5" - 9" (127-228mm)	5" (127mm)	6" (152mm)	13" (330mm)
#7	6" - 11" (152-279mm)	5 1/2" (139mm)	5 1/2" (139mm)	14 1/2" (368mm)
#8	7" - 13" (177-330mm)	6" (152mm)	6" (152mm)	16 1/2" (412mm)
#9	9" - 19" (228-482mm)	7 3/4" (196mm)	9" (228mm)	25 1/4" (641mm)

