



Miramac Metals Inc.



PERFORMANCE MEETS STYLE
METAL SIDING & ROOFING

HIGH PERFORMANCE STEEL SOLUTIONS

Miramac Metals manufactures low-maintenance steel roofing, siding, and fencing for residential, commercial, and agricultural applications. Safeguard your building with trusted products that deliver timeless design and long-term value.



Siding



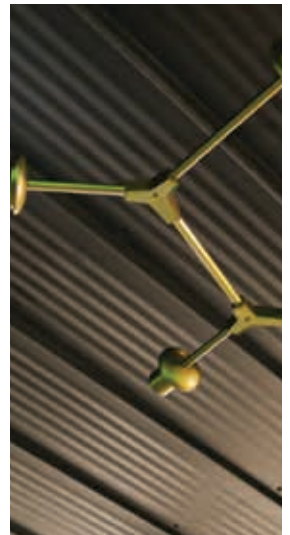
Roofing



Steelform™ Fencing



Soffit



Interior Applications

WHY STEEL?

ENHANCED LOOK, REDUCED MAINTENANCE

Metal siding and roofing options can enhance the appearance of your exterior while offering long-lasting durability with minimal upkeep. Consider these benefits when making material decisions for your next project.



Low Maintenance



Fire Resistant



Energy Efficiency



Eco-Friendly



Design Flexibility



Home Value



Pest Defense



Durability

PRODUCTS

10" LEGACY BOARD & BATT'N

A modern metal version of the classic board and batten style, this steel siding panel features a concealed fastener designed with strength in mind. Unique striations create a polished look while enhancing durability and ease of installation. Additionally, our stunning wood grain finishes blend the beauty of natural wood with the strength of steel. This panel is designed to impress and built to last.



Cut to Length

Wall Coverage

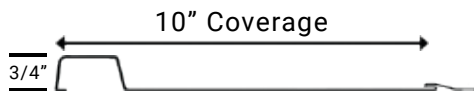
Concealed Fastener

Premium Colors



PRODUCT HIGHLIGHTS

- Concealed fastener system
- Unique wood grain finishes
- Striations for enhanced durability
- Available in all premium colors
- Works well for: Siding, Walls, Wainscot Accents, Gable Accents



10" BATT'N LOC

The 10" Batt'n Loc panel offers the classic wood board and batten style look without the maintenance or upkeep. Offered in all wood grain, rustic and textured matte finishes, this steel siding will add lasting curb appeal whether used on an entire wall, wainscot, or gable accent.

Cut to Length

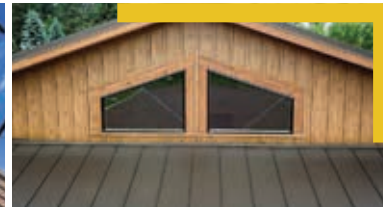
Wall Coverage

Concealed Fastener

Premium Colors

PRODUCT HIGHLIGHTS

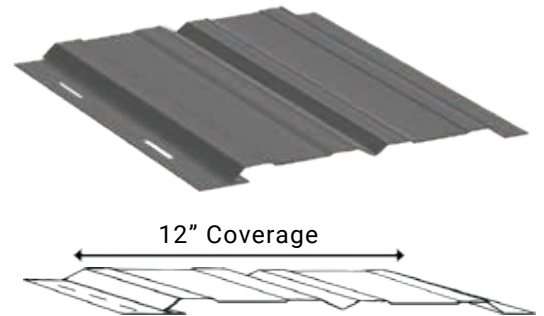
- Low maintenance
- Available in wood grain, rustic and textured finishes
- Works well for: Siding, Wainscot Accents, Gable Accents, Interior Applications



PRODUCTS

DENALI PLANK

A contemporary alternative to lap siding with a concealed fastener and subtle ribs for a clean, flush look. This steel siding option is low maintenance and can be installed vertically or horizontally, offering the perfect custom look for any project.



12' Length

Wall Coverage

Concealed Fastener

Premium Colors

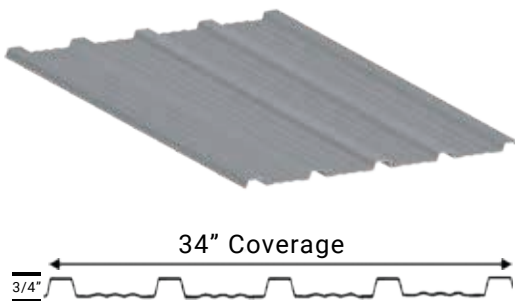
PRODUCT HIGHLIGHTS

- Unique wood grain finishes
- Flush ribbed look
- Concealed fastener
- Installed vertically or horizontally
- Available in over 40 colors and styles
- Works well for: Siding, Walls, Accents



ELITE BOARD & BATT'N

Achieve the classic board and batten look with this more economical through fastened metal siding panel. Specifically manufactured in a low maintenance and user-friendly design, Elite Board & Batt'n panels have the versatility for use on both residential and light commercial projects. Offered in all premium and standard finishes, achieve the look of wood grains and rustic finishes without sacrificing durability.



Cut to Length

Coverage

Affordable

Premium Colors

PRODUCT HIGHLIGHTS

- Unique wood grain finishes
- Low maintenance
- Installation friendly
- Residential and light commercial use
- Sheathing optional, not required
- Available in wood grain and rustic finishes
- Works well for: Homes, Light Commercial, Garages, Barndominiums, Pole Barns



PRODUCTS

GR80 SNAP LOCK

A high-quality, concealed fastener panel developed with strength in mind. Whether for roofing or siding, the unique interlocking design provides an attractive, clean finish with superior defense against the elements. This product offers an exceptional roofing option in all-weather environments. Available in a variety of premium and standard colors, and meeting typical industry standards, the Snap Lock panel offers a versatile and enhanced solution to a broad range of projects.



Cut to Length



Coverage



Concealed Fastener

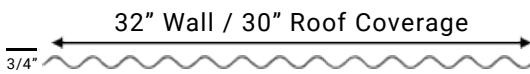


Premium Colors



PRODUCT HIGHLIGHTS

- Enhanced protection
- Concealed fastener
- Notching available
- Superior defense against the elements
- Enhanced snow load capabilities
- Offered in 29 and 26 gauge
- Application in all-weather locations
- 29 gauge available in all premium colors
- Works well for: Siding, Roofing, All-Weather Locations



DESIGNER

The Designer panel offers a classic metal look, with the versatility to customize and fit the needs of any project. It can be installed both vertically and horizontally, is available in a broad variety of colors and textures, and is well-suited for both interior and exterior applications. Add a vibrant touch to your outdoor space or use it to create a striking feature wall. Easy to hose down and maintain, this panel offers both lasting durability and timeless style.

PRODUCT HIGHLIGHTS

- Classic metal look
- Installed vertically and horizontally
- Easy cleaning and maintenance
- Sheathing optional, not required
- Available in over 40 colors and styles
- Works well for: Siding, Walls, Roofing



Cut to Length



Wall Coverage



Roof Coverage



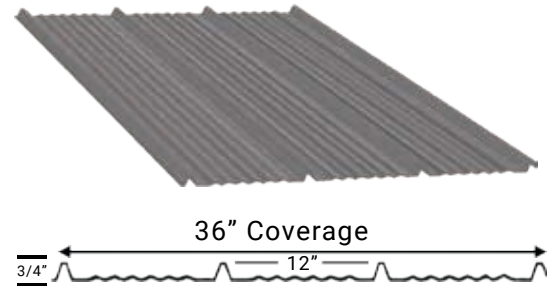
Premium Colors



PRODUCTS

APEX

Engineered to meet the same specifications as Tuff Rib, the APEX panel offers a more modern look. Strategically designed striations create a unique, one-of-a-kind profile suited for residential, commercial and agricultural applications that you won't find anywhere else. Manufactured in more than 40 colors and textures, this steel panel is well suited for both interior and exterior applications, and for both siding and roofing.

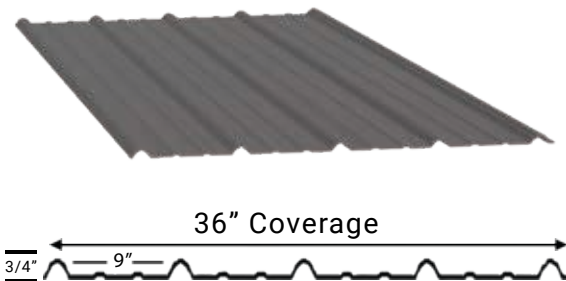


PRODUCT HIGHLIGHTS

- Meets same specifications as Tuff Rib
- Modern and versatile
- Sheathing optional, not required
- Available in over 40 colors and styles
- Works well for: Siding, Walls, Roofing, Accents

TUFF RIB

Tried and tested, the Tuff Rib panel is versatile and long lasting. It can be installed over wood, steel, or other solid substrates and offers limitless interior and exterior applications with its durable, easy to install, and low-maintenance features. Explore our galleries further for both commercial and residential applications.



PRODUCT HIGHLIGHTS

- Durable and low-maintenance
- Suitable for residential, agricultural and commercial
- Available in over 40 colors and styles
- Works well for: Siding, Walls, Roofing, Wainscot Accents



Cut to Length

Coverage

Affordable

Premium Colors



Cut to Length



Coverage



Affordable



Premium Colors



Cut to Length



Coverage



Affordable



Premium Colors

PRODUCTS



Cut to Length



Coverage



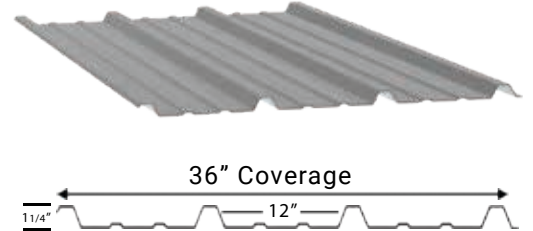
Affordable



20+ Colors

PBR

Commonly used on pole buildings and other large or all-steel structures, the PBR panel is a durable, multi-use option. Enhanced structural properties allow this panel to span longer distances between purlins. Manufactured in thicker gauge material to allow for greater load capacity, this panel can be installed vertically or horizontally and offers an economic alternative to similar products.



PRODUCT HIGHLIGHTS

- Can accommodate longer spans between purlins
- Installed vertically and horizontally
- Enhanced load capacity
- Available in over 20 colors and styles
- Works well for: Roofing, Siding, Light Commercial Buildings, Agricultural Projects

NEED INSPIRATION?

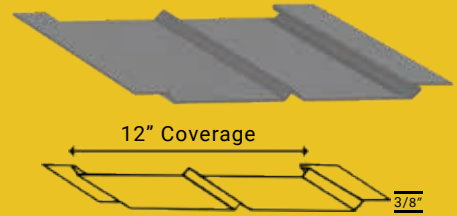
**CHECK OUT
OUR DESIGN
GALLERY**



PRODUCTS

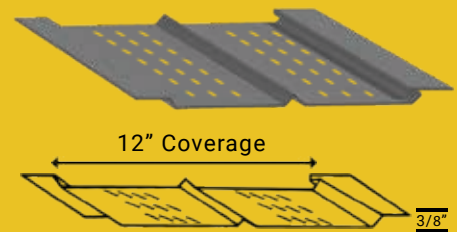
SOFFIT

Soffit maintenance can be one of the most tedious tasks, requiring work from below. Miramac's metal soffit solutions offer a low-maintenance alternative, available in a wide range of beautiful colors and finishes. More than just an aesthetic upgrade, steel soffit is a long-term investment. Miramac's soffit products provide superior framing protection and defense against pests while offering a durable, maintenance-free solution. Whether used as a standalone metal feature or as part of a complete package with metal siding and roofing, metal soffit is an essential addition to projects of all sizes.



SOLID SOFFIT

A durable alternative to other materials with lasting curb appeal



VENTED SOFFIT

For areas with increased air circulation needs

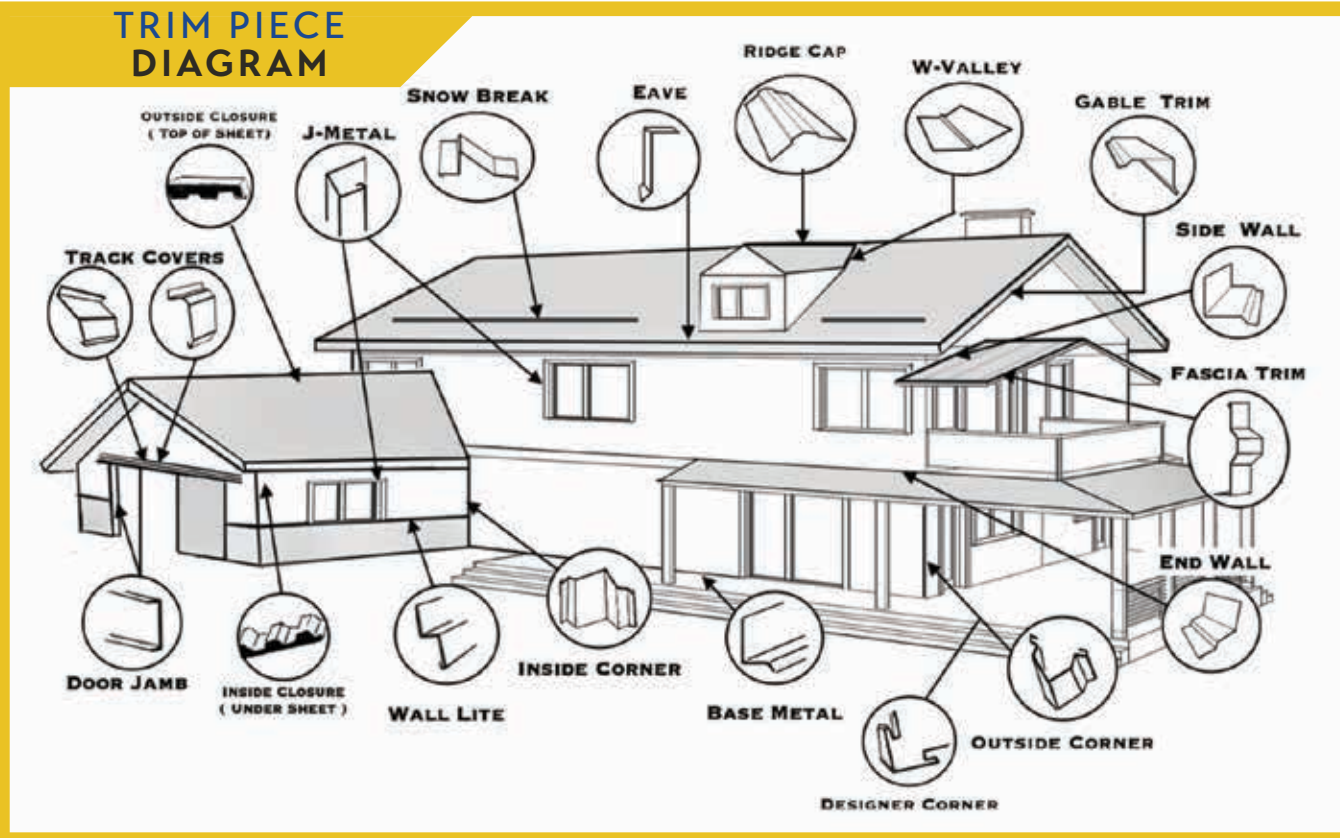
Soffit: Vintage Pinewood

Siding: 10" Batt'n Loc in Onyx

COLOR AVAILABILITY CHART

COLOR AVAILABILITY CHART			10" Legacy Board + Batt'n	Denali	Elite Board + Batt'n	GR800 Snap Lock	26 ga GR800 Snap Lock	Designer	Apex	Tuff Rib	PBR	10" Batt'n Loc	Soffit	Seelform Fencing
Premium Colors	Wood Grains	Vintage Pinewood (38)	●	●	●	●		●	●	●		●	●	●
		Wooden Concrete (41)	●	●	●	●		●	●	●		●	●	
		Natural Dark Wood (37)	●	●	●	●		●	●	●		●	●	●
	Brushed Metallic	Dark Gray Zinc (40)	●		●	●		●	●	●		●	●	
	Rustic	Corten Rust (36)	●	●	●	●		●	●	●		●	●	●
Corten Moss (39)		●	●	●	●		●	●	●		●	●	●	
Textured Matte (Armor Tex)	Tile Red (34)	●	●	●	●		●	●	●		●	●		
	Onyx Black (32)	●	●	●	●		●	●	●		●	●		
	Graphite (30)	●	●	●	●		●	●	●		●	●		
	Burnished Slate (29)	●	●	●	●		●	●	●		●	●		
	Blue Gray (33)	●	●	●	●		●	●	●		●	●		
Standard Colors	White (1)	●		●	●		●	●	●	●		●	●	
	Parchment (2)		●	●			●	●	●	●	●	●	●	
	Hickory (3)		●	●			●	●	●	●	●	●	●	
	Weathered Copper (4)		●	●	●	●	●	●	●	●	●	●	●	
	Medium Brown (5)		●	●			●	●	●	●	●	●	●	
	Dark Brown (6)		●	●	●	●	●	●	●	●	●	●	●	
	Light Gray (7)		●	●	●	●	●	●	●	●	●	●	●	
	Dark Gray (8)		●	●	●	●	●	●	●	●	●	●	●	
	Sage Green (9)		●	●			●	●	●	●	●	●	●	
	Dark Forest Green (10)		●	●	●	●	●	●	●	●	●	●	●	
	Dark Blue (11)		●	●	●	●	●	●	●	●	●	●	●	
	Red (12)		●	●	●	●	●	●	●	●	●	●	●	
	Galvalume (13)		●	●	●	●	●	●	●	●	●	●	●	●
	Copper Penny (14)		●	●	●	●	●	●	●	●	●	●	●	
	Stone (15)		●	●			●	●	●	●	●	●	●	
	Black (16)		●	●	●	●	●	●	●	●	●	●	●	
	Dark Green (17)		●	●			●	●	●	●	●	●	●	
	A.S. Blue (18)		●	●			●	●	●	●	●	●	●	
	Bright Red (19)		●	●			●	●	●	●	●	●	●	
	Ivory (20)		●	●			●	●	●	●	●	●	●	
	Light Stone (21)		●	●			●	●	●	●	●	●	●	
	Sandstone (22)		●	●	●	●	●	●	●	●	●	●	●	
	Ash Gray (23)		●	●			●	●	●	●	●	●	●	
	Forest Green (24)		●	●			●	●	●	●	●	●	●	
	Soft White (25)		●	●			●	●	●	●	●	●	●	
Galvanized		●	●			●	●	●	●	●	●	●		

TRIM PIECE DIAGRAM



PREMIUM & ARMOR TEX

COLORS & COATINGS

WOOD GRAIN FINISHES

Authentic wood looks with enhanced durability



VINTAGE
PINWOOD (38)



NATURAL DARK
WOOD (37)



WOODEN
CONCRETE (41)



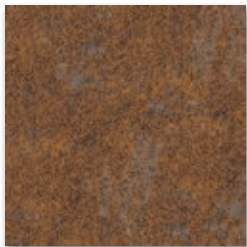
AGED CEDAR (42)

RUSTIC FINISHES

Realistic aged Corten without the wait



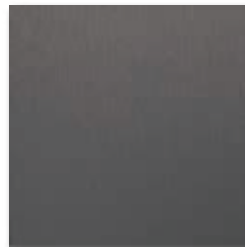
CORTEN MOSS (39)



CORTEN RUST (36)

BRUSHED METALLIC

*Sophisticated
& distinctive*



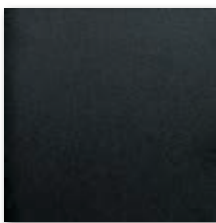
DARK GRAY ZINC (40)

TEXTURED MATTE COATINGS

Stunning matte coatings for every project



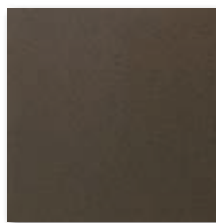
TILE RED (34)



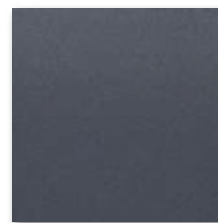
ONYX BLACK (32)



GRAPHITE (30)



BURNISHED
SLATE (29)



BLUE GRAY (33)

Digital images are not exact. Please request color samples for the most accurate depiction.

Premium and Armor Tex products are batch-sensitive and directional in nature. Miramac strongly advises against mixing batches. All products purchased with intention of matching should be purchased in the same order. Miramac will not be responsible for any materials that do not match in color or texture.

STANDARD COLORS & COATINGS

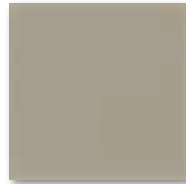
Miramac manufactures more than 25 pre-painted standard colors, offering smart value options to customize and meet the needs of any project.



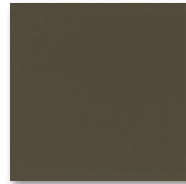
WHITE (1)



PARCHMENT (2)



HICKORY (3)



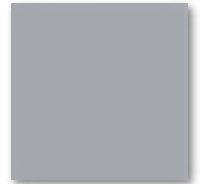
WEATHERED COPPER (4)



MEDIUM BROWN (5)



DARK BROWN (6)



LIGHT GRAY (7)



DARK GRAY (8)



SAGE GREEN (9)



DARK FOREST GREEN (10)



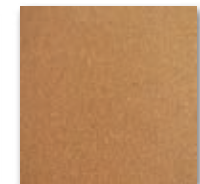
DARK BLUE (11)



RED (12)



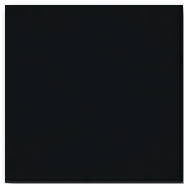
GALVALUME (13)



COPPER PENNY (14)



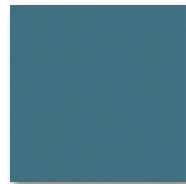
STONE (15)



BLACK (16)



DARK GREEN (17)



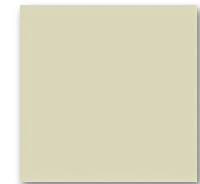
A.S. BLUE (18)



BRIGHT RED (19)



IVORY (20)



LIGHT STONE (21)



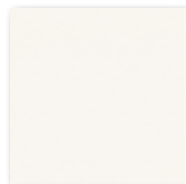
SANDSTONE (22)



ASH GRAY (23)



FOREST GREEN (24)



SOFT WHITE (25)

Digital images are not exact. Please request color samples for the most accurate depiction.



Miramac.com



Miramac
Metals INC.

SPOKANE

13906 N Newport Hwy
Mead, WA 99021

(509) 466-1732

sales@miramac.com

TRI-CITIES

1699 E Ainsworth Ave
Pasco, WA 99301

(509) 545-0170

pasco-sales@miramac.com